



**PT DUNGGIO DRILLING
DRILLING CONTRACTOR**

Safety for us & Environment for the future

DRILLING PROJECT MANAGEMENT & RIG SERVICES



COMPANY PROFILE

Your Trusted Business Partner

TABLE OF CONTENT

Vission and Mission	1
DD Core Value	2
DD is your Trusted Business Partner	3
Company History & Milestone	4
Organization Chart	6
Healthy, Safety & Environment	8
Rig & Machine Inventory List	9
Rig DDJC175	10
Rig DDJC250	11
Rig DD-JC500	12
Rig Tractor Mounted DD-JC500	14
Rig DDLY38	15
Rig DDLY44	17
RIG UDR1600D (351 HP)	19
Support Equipment	21
Company Experience	22
DD Drilling Projects	25





VISION & MISSION

VISI COMPANY VISION **PERUSAHAAN**

PT. Dunggio Drilling bertekad menjadi simbol kontraktor pengeboran terbaik diregional

PT Dunggio Drilling determines to be the symbol of Excellence Drilling Contractor in Regional.



MISI COMPANY MISSION **PERUSAHAAN**

Memberikan jasa pengeboran yang berkualitas dan efisien dengan harga kompetitif, didukung teknologi mesin bor yang dimodifikasi dengan baik serta mengutamakan keselamatan dan keselamatan kerja pada setiap aktivitasnya.

Provide quality and efficient Drilling Service with Competitive Price, integrate with good modified drilling technology machine and also value health & Safety in all we do.

D2 CORE VALUE

- D** Develop Always develop mutually beneficial partnership with client, employee & Society
- U** Upholding High Health & Safety Standard Upholding high health & safety standard in all company operation
- N** New Technology Modification Always looking & deliver for new technology in innovative ways to meet client expencatation
- G** Growing Growing together with client, supplier, employee and society
- G** Good Good Core Recovery and Drilling result
- I** Integrity With interity, we value openness and honesty in all our operation activities
- O** On time On time in delivering project target timeline to client



Dunggio Drilling is Your Trusted Business Partner

DUNGGIO DRILLING was established in 2004 by Good Dunggio in the field of Drilling services to drill for Coal and Mineral. Currently expanding its business into Oil & Gas and Geothermal drilling services.

We provide Drilling Project Management and Rig Services focussing on client satisfaction with a diverse proven Land Drilling Rig Fleet managed by highly trained and experience staff, with an exceptional work safety record and high QHSE Standard.

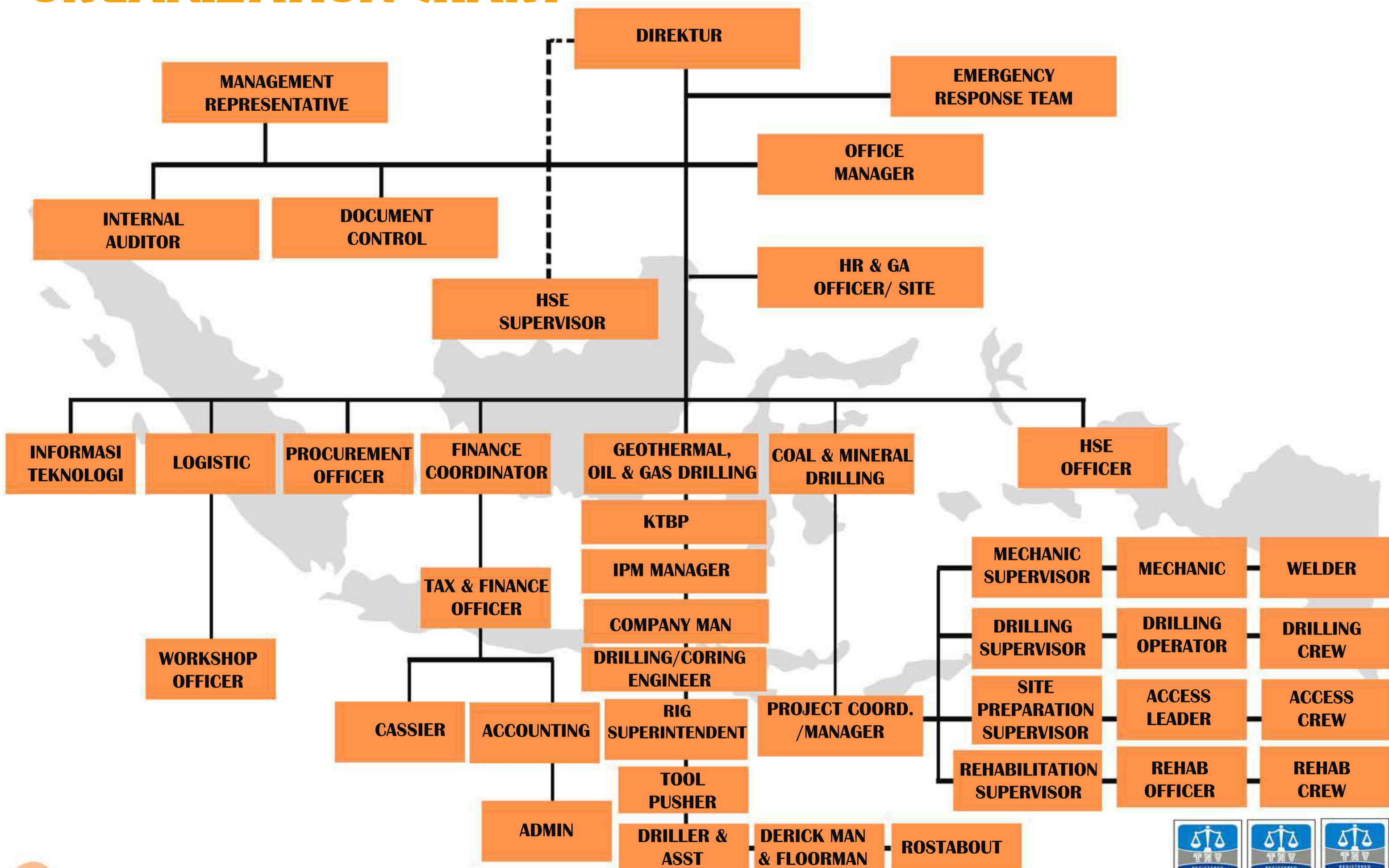


COMPANY HISTORY & MILESTONE

Founded in 2004, Dunggio Drilling focus on Land Rig Drilling services for Coal & Mineral Drilling and currently expanding capabilities and services into Oil & Gas and Geothermal



ORGANIZATION CHART



Healthy, Safety & Environment

DUNGGIO DRILLING is committed to improve quality, safety and occupational health in accordance with Standard Integration of

- The International Quality Management ISO 9001:2015
- The International Occupational Health and Work Safety Standard Management ISO 45001:2018
- The International Environmental Management System ISO 14001:2015



ISO 9001: 2015



ISO 45001: 2018



ISO 14001:2018

The Company applied these QHSE International Standard with the aim to prevent things that are harmful to health, or injury to employees, and detrimental impact on the environmental pollution in the entire operation of PT Dunggio Drilling to exceed Customer expectation.

To achieve that goal, management and staff have a leadership function in the communication and implementation to ensure compliance with QHSE policies standards.

Rig and Machine Inventory List

NO	RIG TYPE & MACHINE	QUANTITY	OUTPUT	MERK & TYPE	YEAR OF MANUFACTURE	CONDITION
1	UDR 1600D	1 Unit	351 hp	UDR	2012	Good
2	DDLY 44	3 units	110 hp	Longyear	1985	Good
3	DDLY 38	5 units	80 hp	Longyear	1985	Good
4	DDJC-250	4 unit	40 hp	Jacro	2012	Good
5	DDJC-500	5 unit	80 hp	Jacro	2012	Good
6	TRACTOR MOUNTED DRILLING RIG DDJC500	1 Unit	97 hp	Jacro	2016	Good
7	DDJC-175	11 Units	31 hp	Jacro	2010	Good
8	Track Mounted	2 units	110 hp	Hitachi	1980	Good
9	Forklift Patria	1 unit	100 hp	Komatsu	2020	Good
10	Tractor Kubota MX 5100D	1 unit	45 hp	Kubota	2010	Good
11	Tractor Kubota M 9540/R	1 unit	84 hp	Kubota	2012	Good
12	Tractor Kubota M30	2 units	40 hp	Kubota	2016	Good
13	Excavator	3 unit	150 hp	Komatsu	2012	Good
14	Substructure	4 unit	-	Steel	2015	Good

ALL THESE RIG AND SUPPORT EQUIPMENT ARE COMPLETELY OWNED 100% BY DUNGGIO DRILLING



Quality Management



Occupational Health & Safety Management



Environment Management

SPECIFICATION DDJC175

A Man Portable Rig. This unit can drill up to PQ Coring 10meter, HQ Open Hole 120 meter (Single tube), HQ Coring up to 100meter (triple tube).

SYSTEM :

- **Full hyd. System**
- **Hyd. Top drive**
- **Skid Mounted with knock down assembly**
- **Pull up/Down by Chain RS80, driven by hyd. Motor.**



SPECIFICATION :

- **Driven by Vanguard petrol engine 31 hp**
- **Rotary speed 250 rpm up to 500 rpm**
- **Oil capacity 40 Liter of Hyd. Tank**
- **Complete Hyd. Hose with quick join coupling**



SPECIFICATION DDJC250

The standard type can drill up to PQ 60m, HQ 100m, NQ 150m and modified type can drill up to PQ 100m, HQ 150m, NQ 200m.



SPESIFICATION :

- 1) Non Winching, but Man Portable**
- 2) Rotary speed up to 600 rpm (low and high gear box)**
- 3) Dry Weight Engine (Exclude Prime) 250 kg.**

The heaviest part in this rig.

- 4) Oil capacity 100 Liter of Hyd. Tank**
- 5) Diesel Fuel Tank Capacity 30 liter**
- 6) Complete Hyd. Hose with quick Join Coupling**
- 7) FMC 535 Mud Pump, variable speed (No V-belt)**
- 8) Wireline system powered by Kubota 4-Cylinder:**
 - 40 HP / 3000 rpm (standard type) and**
 - 60 HP / 3000 rpm (modified).**

SPECIFICATION DDJC500

Wireline system powered by Kubota 4-Cylinder 97 HP (Turbo Charger)/ 2600 rpm.

*Standard Rig can drill up to PQ 150 meter, HQ 300 meter, NQ 450 meter, while *Modified Rig can drill up to PQ 250meter, HQ 400m and NQ 550m.

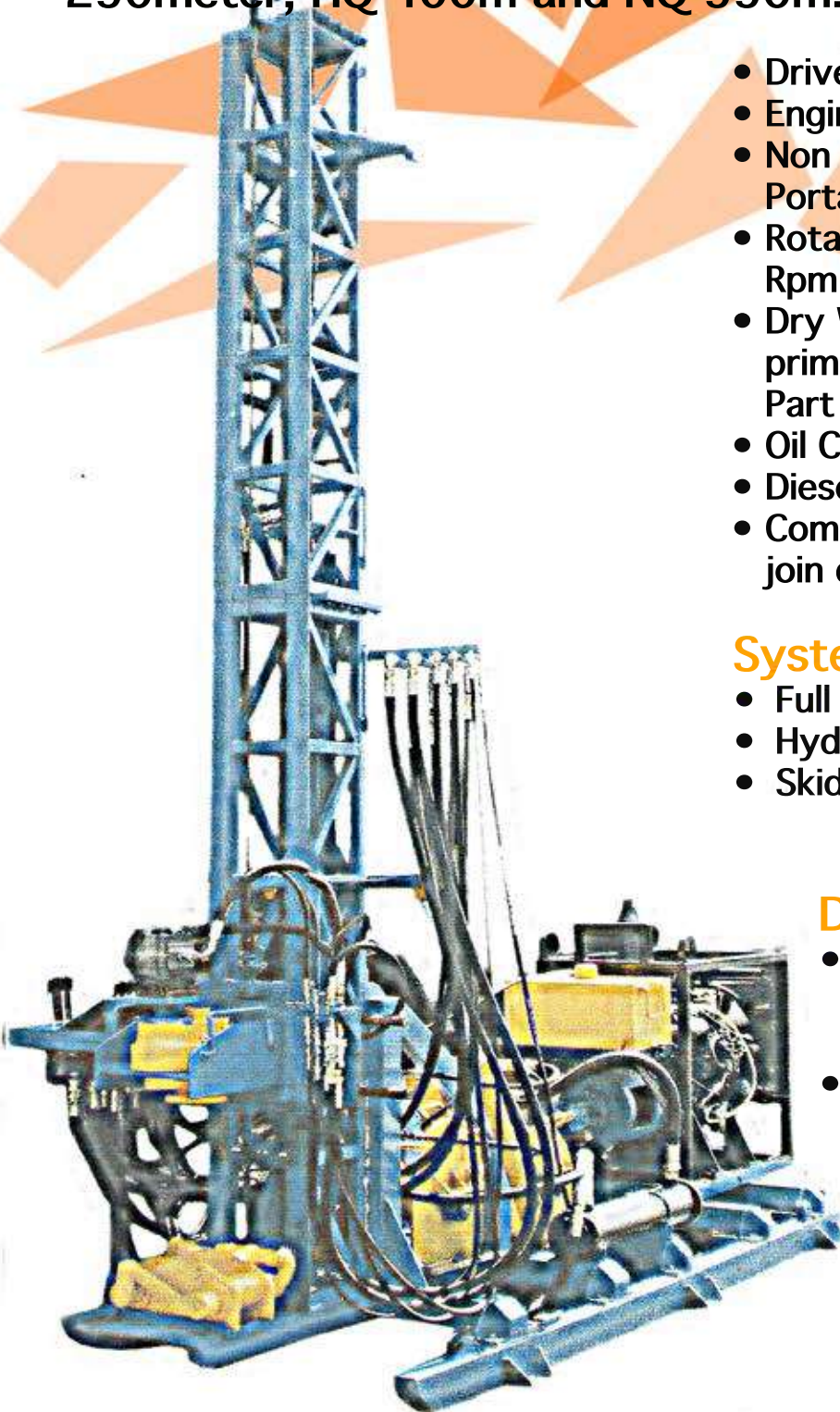
- Driven by Kubota Diesel
- Engine 97 hp (Turbo)
- Non Winching, but Man Portable
- Rotary Speed up to 900 Rpm (High/Low Transmission)
- Dry Weight Engine (exclude prime) 350 kg. The heaviest Part in this rig
- Oil Capacity 100 ltr of Hyd. Tank
- Diesel Fuel Tank Capacity 50 Liter
- Completed Hyd. Hose with quick join coupling

Systems :

- Full hyd. System
- Hyd. Top drive
- Skid Mounted

Dimension :

- Length x Width x Height : 3.40m x 1.50m x 165m (without mast)
- Weight : 2500kg



SPECIFICATION DDJC500

NO.	DETAILS	WEIGHT
1.	Engine Kubota V 3300	529 kg
2.	Chasis, Hyd. Hose , Control bank, Drum Wireline	795 kg
3.	Bottom Mast	734 kg
4.	Top Mast	175 kg
5.	Gear Box , Water swivel	144 kg
6.	Fuel Tank	70 kg
7.	Skid Base	238 kg
8.	Support Mast	47 kg
9.	Foot clamp	54 kg

1. UNIT POWER SUPPLY (NON ENGINE DIESEL)

- Hydraulic power by Gear pump 70 + 16 ltr/minute (for rotary, and for up/down) max pressure 3000 psi/210 bar
- Hydraulic oil tank : 80 Litre
- Diesel Fuel tank : 30 Litre

2. UNIT CONTROL DEVICE

- Hand control valve 3Bank 3/4" Monoblock Branded Integral by Italy HDM 20-3D/ d5 (for hydraulic Rotation, Hydraulic Winch and Hydraulic Wireline)
- Hand control Valve 5bank 1/2" Monoblock branded Integral by Italy HDM 18-50 1/2" (for hydraulic Up down, Hydraulic lift mash, Hydraulic sliding, hydraulic Jack Mash and Clamp Chuck Assy)
- Relief Valve : For adjustment pressure up/down RV2-1/2 max, pressure 3000 psi
- Regulator Valve : For adjustment pressure flow up/down integral FRV 2-1/2"
- Brake Valve : For adjustment brake winch and wireline, branded integral Italy CBV2-1/2" 0-3000 psi
- Pressure Gauge : By skon USA 0-250 psi

3. UNIT POWER DEVICE

ROTARY HEAD MOTOR DDJC500 5(RH 1/2") 4000 Series 109-1116-006 Eaton USA

- Speed Power : 0-1200 rpm
- Power Pressure : 0-3000 psi
- Speed Rotary : 700 -1500 rpm

UP/DOWN CYLINDER HYDRAULIC DDJC500 5CH Dia 85x100x50xStroke 1650mm

- Torsi Capacity : 915MM (66641 lb/in)
- Speed Power : 1000MM/10 Second
- In/out prot : 1/2" SAI O-ring

WIRELINE HYDRAULIC MOTOR DDJC500 5(RH 2/2) 2000 series 104-1228-0006 ETN USA

- Torsi Capacity : 452NMC (3961 lb/in)
- Speed Power : 0-250 Rpm
- In/out prot : 1/2" SAI O-ring

WINCH HYDRAULIC MOTOR DDJC500 5(RH 2/2) 4000 Series 109-1215-006 ETN. USA

- Torsi Capacity : 452NMC (3961 lb/in)
- Speed Power : 0-250 Rpm
- In/out prot : 1/2" SAI O-ring



TRACTOR MOUNTED DRILLING RIG

Tractor Mounted Drilling Rig DDJC500. This Rig is a Wireline system powered by Kubota 4-Cylinder 97 HP (Turbo Charger)/ 2600 rpm.

***Standard Rig can drill up to PQ 150 meter, HQ 300 meter, NQ 450 meter, while *Modified Rig can drill up to PQ 200 meter, HQ 350 meter, and NQ 500 Meter.**

- **Driven by Kubota Diesel Engine 97 hp (Turbo)**
- **Rotary Speed up to 900 Rpm (High/Low Transmission)**
- **Dry Weight Engine (exclude prime) 350 kg. The heaviest Part in this rig)**
- **Oil Capacity 100 ltr of Hyd. Tank**
- **Diesel Fuel Tank Capacity 50 Liter**
- **Completed Hyd. Hose with quick join coupling**

Systems :

- **Full hyd. System**
- **Hyd. Top drive**

Dimension :

- **Length x Width x Height : 3.40m x 1.50m x 165m (without mast)**
- **Weight : 2500 kg**



SPECIFICATION DDLY38



ENGINE	: Deutz 6L912 2500 Rpm 115 HP
GEAR BOX	: 1st Gear 300 - 400 Rpm 2nd Gear 500 - 600 Rpm 3rd Gear 700 - 800 Rpm 4th Gear 900 - 1000 Rpm
TRANSMISSION	: Low and High
CLUTCH	: 14" Clutch Assembly Manual Clutch Lever Set Up
TRANSMISSION TO CHEST	: Cross Joint
ELECTRICAL	: Electrical Start Panel with Warning Lights - Low Oil Pressure & High Temperature Gauges
WIRELINE	: Drive by Hydraulic Motor
DRILL HEAD CHUCK JAWS	: Hydraulic System
FOOT CLAMP JAWS (HYDRAULIC SYSTEM)	: Full Set of Foot Clamp Jaws NQ Tungsten Inserts HQ Tungsten Inserts PQ/HWC/HWT Tungsten Inserts

This unit is equipped with Hydraulic Rod Breaker.



SPECIFICATION DDLY38

Package all mounted on 5 meter x 2 meter Fully Plated Skid with Tow Points, platforms are around the rig and Save Guard in every turning parts.

DRILLING DEPTHS BASED		STANDARD	MODIFIED
ON CLEAN HOLE	: NQ	400 Meter	650 Meter
	: HQ	300 Meter	450 Meter
	: PQ	130 Meter	250 Meter

MAIN PUMP : E.T.N. MEXICO PVE19AR
Deutz linked with Belt

MAIN VALVE BANK : Commercial 5 Level Valve Bank

MAST : Telescopic 10m
at the top of Mast equipped with Fall Arrester system

LIFT CYLINDER : Single Stroke

WIRELINE : Driven by Hydraulic Motor

WIRELINE SPOOL : Radial Made with 650 meter & 6mm Wire

HEAD OPENER : Hydraulic Head Opener

MUD MIXER : Operated by Hydraulic

FOOT CLAMP : Hydraulic operated from Main Valve Bank
Radial made Foot Clamps

HYDRAULIC TANK : 100 Liter Capacity

MUD PUM ENGINE : Yanmar TS230R, 2500 Rpm, 23 HP.

MUD PUMP : WII22 535 John Bean Mud Pump (FMC)
1000 PSI max Pressure with Relief Valve
Fitted 2" inlet, 160 ltr/minute

MAIN HOIST : Max Pull 10150 lbf
Rope 19mm, 25 Meter



SPECIFICATION DDLY44

The modular concept of this Rig permits the operator to select components for a system, which is specifically tailored to meet certain drilling requirements. The DDLY 44 has an important safety feature, namely an automatic pre-torque and breakout tool. The drill can be trailer mounted and skid mounted for vertical and angle drilling. The Modified DDLY 44 can drill up to 550m PQ size, 750 m HQ size, 1000 m NQ Size and 350m Open Hole of 8"-10" size for waterwell drilling (depend on the ground condition). This rig equipped with four speed transmission gear.



DIMENSION

Length x Width x Height : 4.11m x 2.65m x 1.62m (without mast)

Tower Height : 10m (550 kg)

Total Weight : 4650 kg

Mast : Telescopic

SPECIFICATION DDLY44

NO.	DETAILS	WEIGHT
1.	Main Engine Deutz Engine Modified 160 hp	600 kg
2.	Transmission	600 kg
3.	Gear Box	100 kg
4.	Head Assy	250 kg
5.	Chassis (Base)	450 kg
6.	Chassis (Upper) + Bracket Mast / Hyd.	300 kg
7.	Drum Wireline / Cable	125 kg
8.	Hyd. Pump + Control Valve	80 kg
9.	Fuel Tank / Hyd. Tank	70 kg
10.	Mast Bottom	160 kg
11.	Mast Middle	150 kg
12.	Mast Top	240 kg
13.	Hyd. Mast	110 kg
14.	Port Mast 2 Pcs Pipe + Mangky Mast (Total 9meter)	270 kg
15.	Injection pump, with output 37 GPM/minutes (FMC Pump), is driven by 23 hp Yanmar engine	350 kg

Main Engine :

Tipe Mesin : DEUTZ F6LQ12
RPM : 3000 RPM
HP : 115 HP
Number of Cylinder : 6
Starter System : Elektric Starter
Engine Oil Capacity : 11 liters (SAE 40)
Solar Tank Capacity : - + 50 Lt
Net weight : 600 Kg

Electrical

Battery : 12V / 100Ah
System : DC



UDR 1600D

The UDR range of exploration core drilling rigs consists of five different models, with N size drilling capacity ranging from 400 m to 2300 m in depth.

The Crawler Mounted UDR 1600D has been designed specifically for diamond coring in medium to deep drilling surface exploration application where site access limits the use of larger drills. The UDR 1600D's compact design combined with its self propelled crawler track drive system makes it an ideal choice for drilling operation in jungle or hilly terrain where the use of heavy truck is difficult.

European grade hydraulics has been utilised for optimum efficiency. This combined with its heavy duty mast, sub structure and high output diesel power pack ensures outstanding drilling performance and reliability.

Safety is recognised as a key priority at UDR. Our standard offering includes purpose designed rod safety spin guards, driller's and offside's work platform

The UDR 1600D can easily be transported in 40ft sea containers

UDR 1600D Features:

- Crawler Mounted design
- Cummins 6CTA diesel power plant - rated output @179KW (2,200 RPM)
- "P" Chuck drive rotation head
- Rotation Head - Max High Speed Rotation @1,200 RPM
- "P" chuck drive rotation head
- Rotation Head - Max high speed rotation @1200 RPM
- B, N, H and P size chuck and rod clamp jaws
- 3.5 metre feed stroke
- 6 metre rod pulling capability
- Rod Safety Spin Guards
- Engine protection auto shut down system
- Maximum depth rating of 1700 metres in N size

(NOTE: Core drilling depth capacity's based on straight vertical, clean drill holes. No allowance made to break core).



Quality Management



Occupational Health & Safety Management



Environment Management

DATASHEET UDR1600D

Power Unit			Wireline winch		
Manufacturer	Cummins		Max pull, bare drum	11 kN	2470 lbf
Model	Cummins 6CTA8.3		Puling speed, bare drum	120 m / min	394 ft / min
Engine power @ 2200 RPM	269 kW	351 hp	Rope diameter / length	6.6 mm / 1500 m	0.26 in / 4920 ft
Diesel type	Turbo charged				
			Main Host		
Rotation head – P chuck drive, hydraulic open, spring close			Max pull, bare drum	135 kN	30 350 lbf
Feed force	50 kN	11 240 lbf	Puling speed, bare drum	40 m / min (low)	131 ft / min
Pull force	189 kN	42 490 lbf		80 m / min (high)	262 ft / min
Max torque	5500 Nm	4045 ft / lbf	Rope diameter / length	22 mm / 35 m	0.87 in / 115 ft
Max rotation, rpm	1200 rpm				
Feed stroke	3500 mm	138 in	Rod clamp		
Max inside diameter	117 mm	4.6 in	Jaw sizes	B. N. H. P	
Gear box	4 shifts				
Ratio:	Spindle speed, rpm		Water pump		
1st	138–190		Max flow	320 L / min	84.5 USgal / min
2nd	277–378		Max pressure	10 Mpa	1450 PSI
3rd	495–675				
4th	866–1200		Track		
			Track pad width	400 m	15.8 in
Hydraulic system			Max up hill angle	30°	
Working pressure	28 Mpa	4060 psi	Haul Capacity	100 kN	22 480 lbf
Cooling	Air cooled				
			Weight		
Mast			Total Weigt	11 000 kg	24 250 lb
2 sections, hydraulic powered life / down, with mast dump					
Length	13 m	39 ft	Shipping Dimension		
Drilling angle	45° to 90°		5250 x 2320 x 2600 mm	207 x 91.4 x 202 in	
Mast dump	1100 mm	43.3 in			
Rod pulling length	9 Meter	27 Feet	Depth capacity*		
			B	2200 m	7216 ft
			N	2000 m	6560 ft
			H	1500 m	4920 ft
			P	1000 m	3280 ft

(NOTE: Core Drilling depth capacity's based on straight, vertical, clean drill holes. No allowance made to break core).



SUPPORT EQUIPMENT



**4 UNITS TRACTOR TRUCK TO
SUPPORT MOVING ACTIVITIES**



2 UNITS TRACK MOUNTED



1 UNIT CRANE TRUCK



1 UNIT MITSUBISHI CABIN



1 UNIT 4X4 PAJERO WAGON



1 UNIT SUBSTRUCTURE



BACK UP SPAREPARTS



FORKCLIFT



EXCAVATOR



DD DRILLING PROJECTS



**MEDCO ENERGY
OIL DRILLING**



**ADARO METCOAL
MOVING RIG BY CHOPPER**



**EPHINDO
CBM DRILLING**



**ADARO METCOAL
COAL DRILLING**



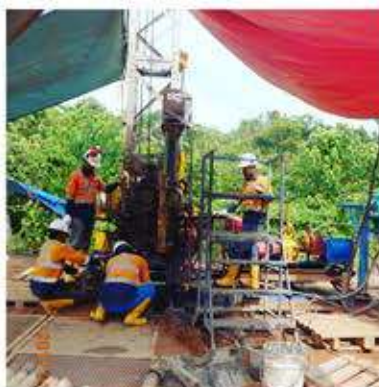
**LEMIGAS
CBM DRILLING**



**BHP BILLITON
ACCESS PREPARATION**



**BHP BILLITON
REHABILITATION**



**BFM - KOREAN GOVERNMENT
GOLD DRILLING**



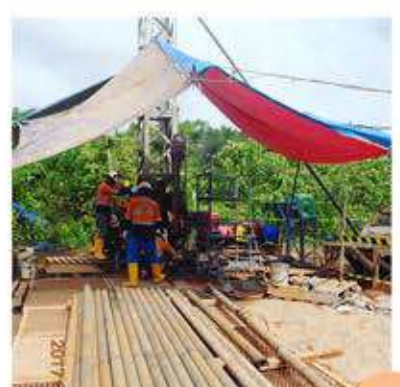
**TIMAH TBK.
TIN DRILLING**



**INDON CBM PTY LTD.
CBM DRILLING**



**BHP BILLITON
MOVING RIG BY CHOPPER**



**ARUTMIN INDONESIA
COAL DRILLING**



Drilling Contractor Services

COAL - MINERAL - OIL & GAS - GEOTHERMAL - WATERWELL - BLASTHOLE DRILLING

PT DUNGGIO DRILLING, JL. Industri Selatan 6 Blok GG 9A, Jababeka II, Industrial Estate, Cikarang Selatan, Bekasi 17550
Ph. 021 - 89841343, Fax 021 - 89841342, email: info@dunggiodrilling.com, Website: www.dunggiodrilling.com